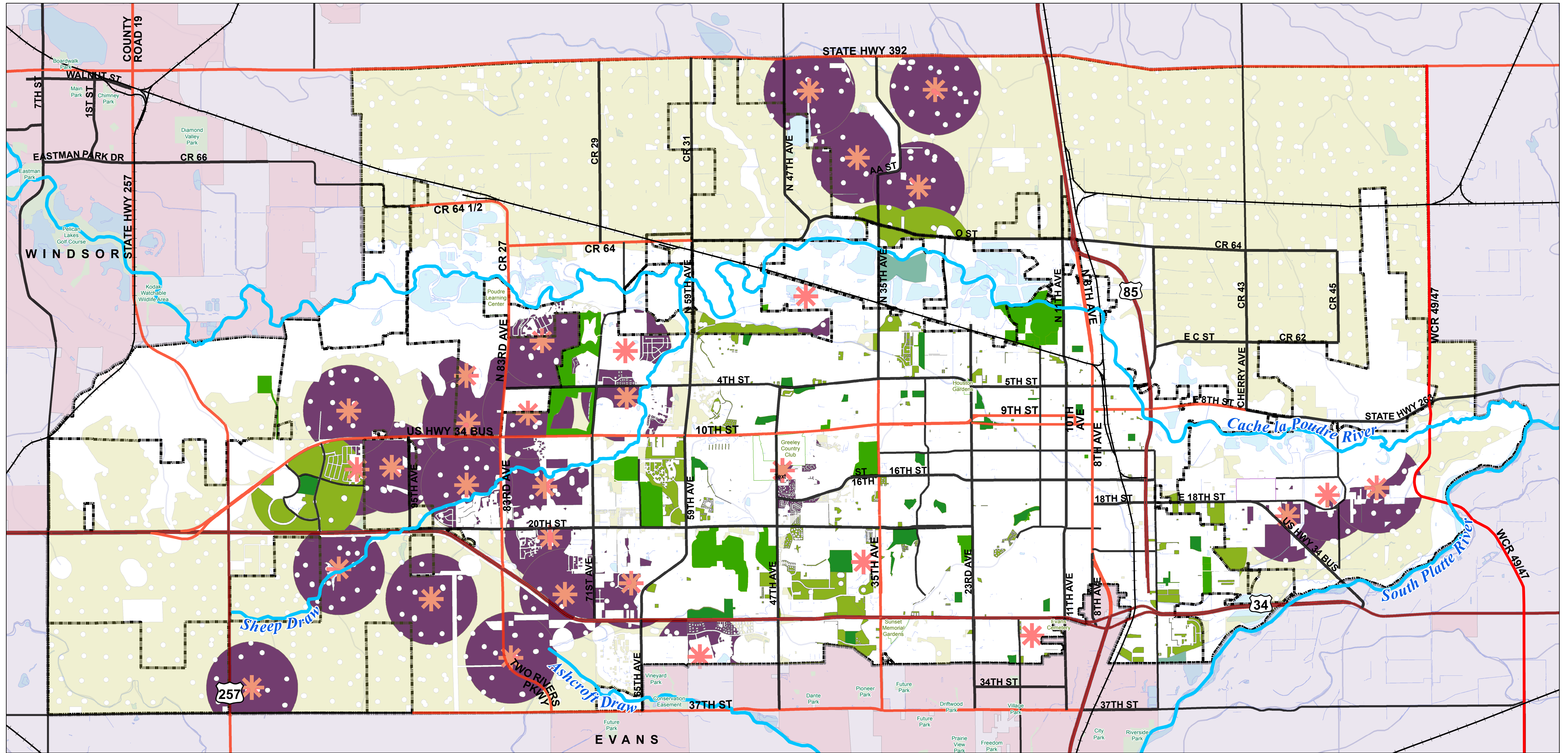


DEVELOPABLE LAND WITH ADEQUATE PUBLIC FACILITIES ANALYSIS (NEIGHBORHOOD PARKS)



Legend

- Land Suitable for Future Development
- Long Range Expected Growth Area
- Greeley City Limits
- Neighboring Towns
- Neighborhood Parks
- Developable Land with Adequate Neighborhood Parks
- Developable Land with Adequate Service from Neighborhood Parks Proposed in the 2035 Master Plan
- Neighborhood Park Location Proposed in the 2035 Parks, Trails, and Open Lands Master Plan

N



0 0.25 0.5 1 1.5 2 Miles

Date of DRAFT Preparation 6/12/17