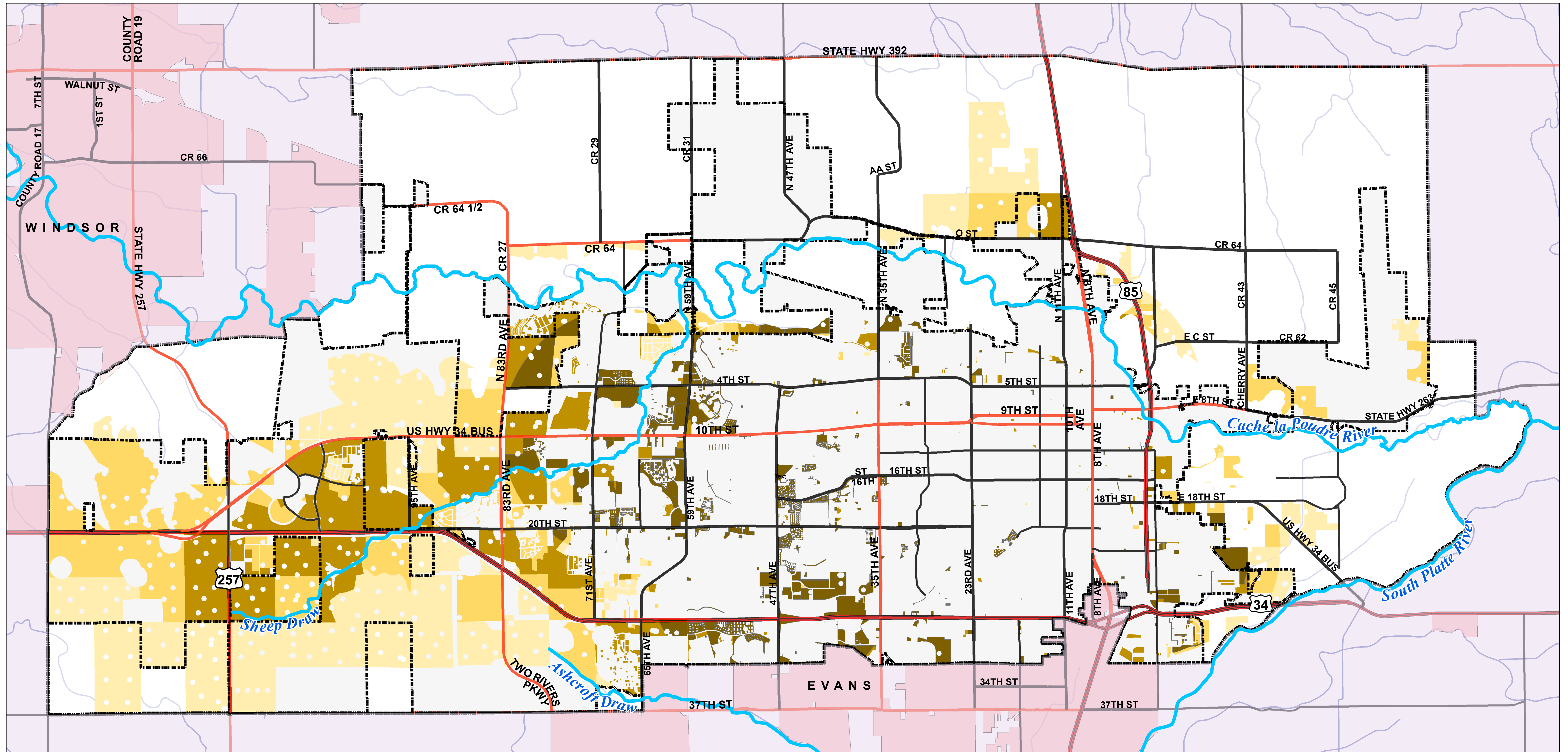


DEVELOPABLE LAND WITH ADEQUATE PUBLIC FACILITIES (INDUSTRIAL AND COMMERCIAL DEVELOPMENT)

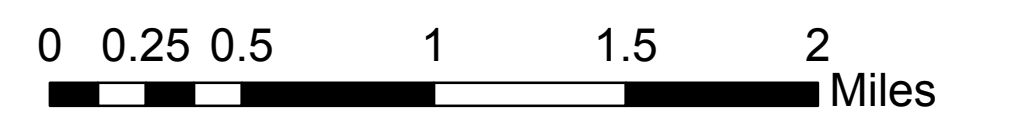
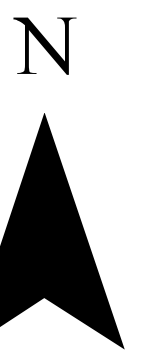


- Greeley City Limits
- Long Range Expected Growth Area
- Neighboring Towns

Legend

Developable Land with Adequate Public Facilities

- One Adequate Public Facility
- Two Adequate Public Facilities
- Three Adequate Public Facilities
- Four Adequate Public Facilities



Date of Preparation 6/14/17