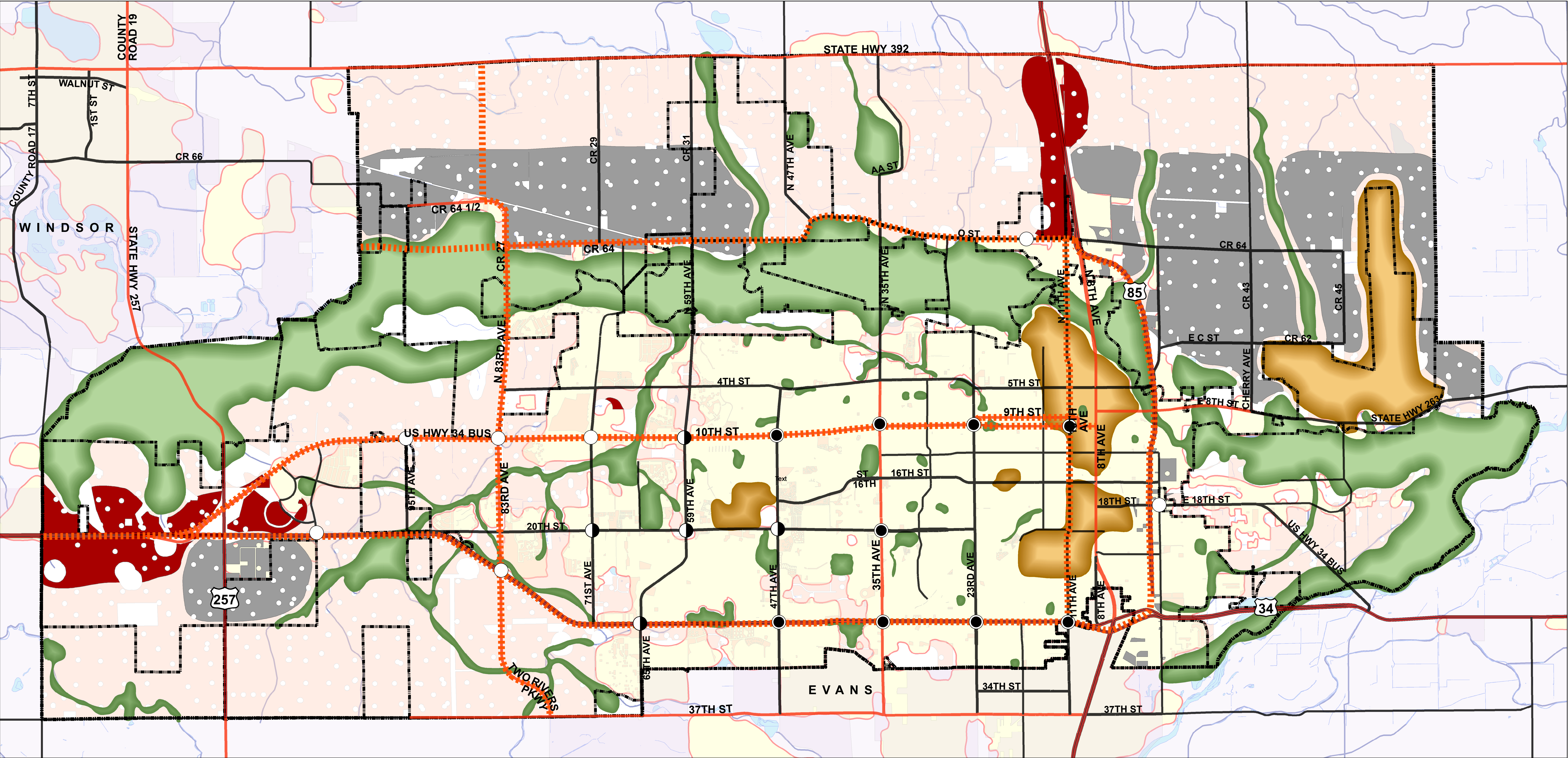


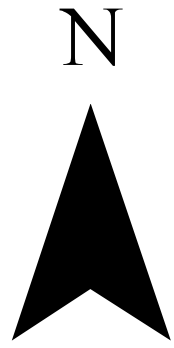
LAND USE AREAS FROM THE 2060 PLAN AVAILABLE FOR FUTURE GROWTH



Legend

- Developed Commercial Node
- Undeveloped Commercial Node
- ◐ Developing Commercial Node
- Multimodal Corridors
- Land Identified in the 2060 Plan Available For Future Employment
- Land Identified in the 2060 Plan Available for Future Industrial Development
- Open Space
- Special Use District

- Long Range Expected Growth Area
- Greeley City Limits
- Land Suitable For Future Develop
- Neighboring Towns
- Developed Land



0 0.25 0.5 1 1.5 2 Miles

Date of Preparation 5/16/17

